

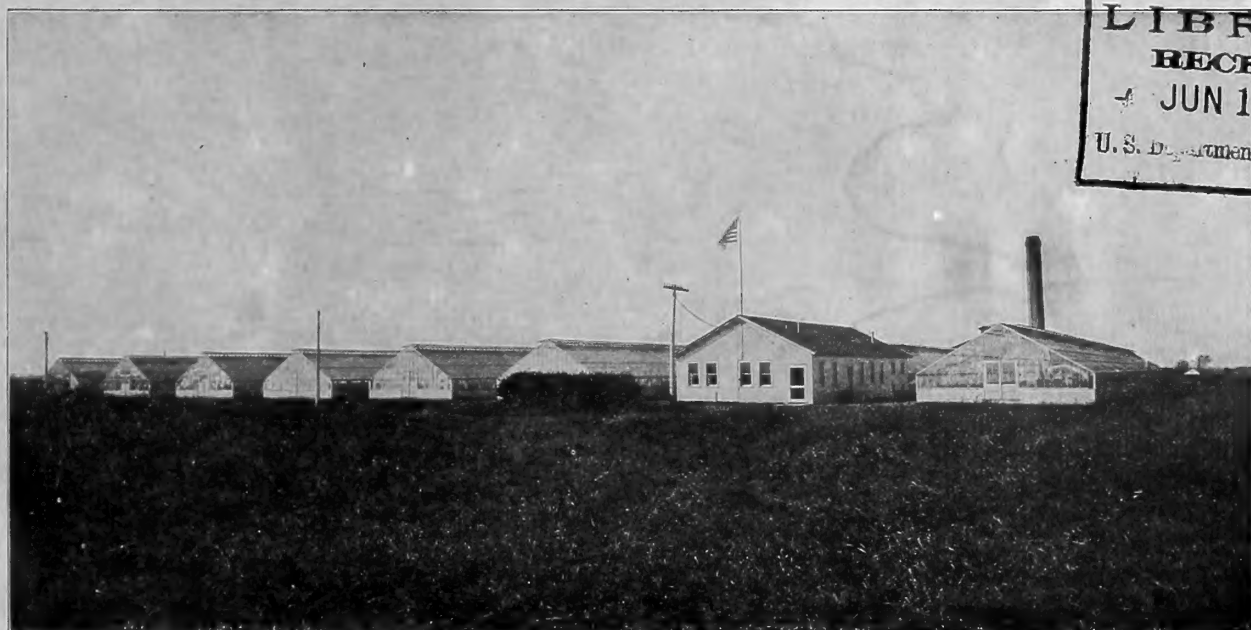
Historic, Archive Document

Do not assume content reflects current scientific knowledge, policies, or practices.

62 25

J. D. THOMPSON CARNATION COMPANY

JOLIET, ILLINOIS.



LIBRARY
RECEIVED
JUN 18 1923 ★
U. S. Department of Agriculture.

CARNATION SPECIALISTS

Price List of Rooted Cuttings for Spring of 1905

Long-Distance Telephone: Joliet, 20.



WE take great pleasure in submitting to the trade our CATALOGUE OF CARNATION CUTTINGS for the fall of 1904 and spring of 1905. We are pleased to state that our stock of Carnations is looking exceedingly fine, being free from disease in every respect, and we anticipate unusually strong cuttings. We have the largest stock of the strictly fancy varieties of any firm in the country, and will be pleased to quote special prices to large buyers. With the large stock we have of each variety, we are in a position to fill large orders on short notice. We have received some very gratifying letters as to the quality of the cuttings sent out last season, and we take this opportunity of assuring our customers that it will always be our aim to supply the very best. NELSON FISHER and MRS. M. A. PATTEN proved all that we claimed for them; so will our other introductions. Thanking you for past favors, and anticipating the pleasure of your confidence and future patronage, we are, with respect,

Yours very truly,

J. D. THOMPSON CARNATION CO.

TERMS.

QUANTITY—Twenty-five or more of one kind will be sold at the 100 rate and 250 or more at the 1,000 rate, except when otherwise noted. Prices subject to change without notice.

CREDIT—We are pleased to open monthly accounts with customers of approved credit. There will be no further discount from invoice.

ORDERS from new customers must be accompanied by remittance or satisfactory reference.

REMITTANCES—All bills are payable in Joliet and should be remitted for by draft on Chicago, P. O. or Express Money Order.

C. O. D. ORDERS must be accompanied by one-half the amount of the order.

WARRANTY—We warrant all Plants and Cuttings that are grown by us to be true to name and to be in a healthy, growing condition when delivered to the Express company, and we will replace any stock not fulfilling these conditions. But we do not warrant any plants of any description to remain free from disease of any kind after they have passed from our care, nor do we assume any responsibility whatever regarding the purchaser's success in cultivating the plants, and orders will be filled by us only upon above conditions.

NOVELTIES sent out by other growers will be delivered as sent out by introducers, and subject to introducer's conditions only.

ALL CLAIMS must be made **IMMEDIATELY UPON RECEIPT OF GOODS**. Later claims will not be considered. Where loss occurs through our fault, we will take pleasure in correcting it, but cannot be held responsible for damages occurring in transit.

THE UNITED STATES, AMERICAN and WELLS FARGO EXPRESS COMPANIES handle our express.

DON'T FORGET to state **WHICH EXPRESS COMPANY** you prefer to handle your consignments.

PACKING is done by experienced men, and plants or cuttings will carry safely to all points when shipped by express.

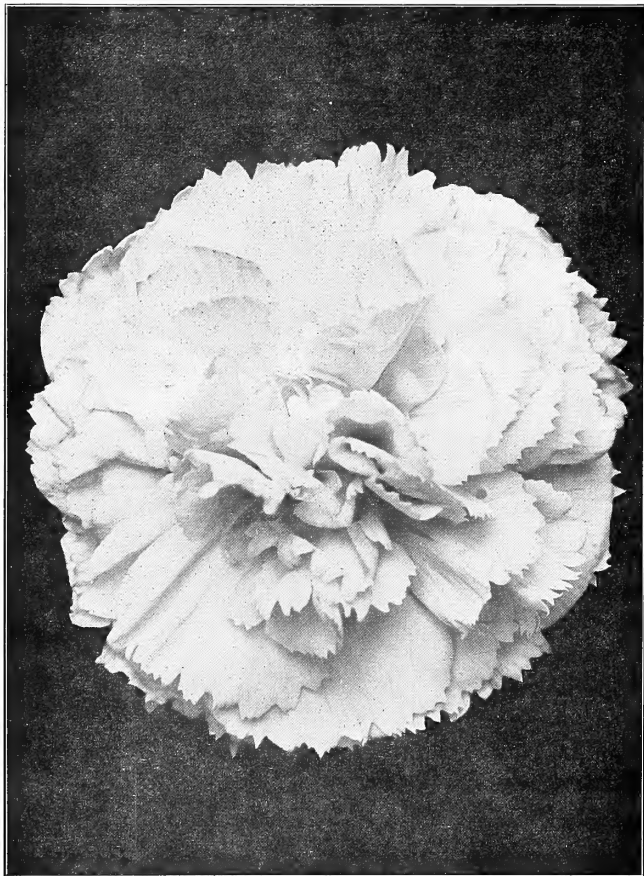
WE PREFER NOT TO SEND ANY PLANTS BY MAIL, and will not unless postage is sent. Then only at purchaser's risk.

THESE QUOTATIONS are made subject to goods being unsold upon receipt of order.

SEND YOUR ORDERS EARLY and do not wait until last of season.

J. D. THOMPSON CARNATION CO.,

JOLIET, ILLINOIS.



GIBSON BEAUTY.

Carnation Novelties for 1905.

GIBSON BEAUTY (Swan Peterson).

COLOR—Magnificent shade of light pink, and entirely different from anything ever originated.

SIZE—Three and one-half inches and over.

FORM—Perfect and ideal for high-grade fancy blooms.

STEM—Twenty-four inches and over. Stiff and wiry.

CALYX—Perfect and never bursts.

FRAGRANCE—A rich spicy clove.

SUBSTANCE—Of the very best. An excellent feature being its keeping and shipping qualities.

HABIT—Of the plant, ideal. Produces no surplus grass, and is a strong and vigorous grower. Every shoot produces a high-grade bloom.

BLOOMING QUALITIES—Not extra early but free and continuous, and needs no special treatment to develop its magnificent blooms.

Price, \$2.50 per dozen; \$3.00 per 25; \$25.00 per 250; \$12.00 per 100; \$100.00 per 1,000; \$95.00 per 1,000 for 2,500; \$90.00 per 1,000 for 5,000; \$80.00 per 1,000 for 10,000.

FRED. BURKI (Jno. Murchi.)

Is the result of a cross between Lawson and a seedling of much merit—the latter being the seed parent. It possesses all the good qualities to induce the most conservative growers to include it among their best whites.

Here are a few of its meritorious points:

FIRST—The blooms come perfect and uniform, averaging 3 to 3½ inches.

SECOND—The stem measures from 20 to 30 inches, being stiff and erect and resembles that of Lawson.

THIRD—It never crops, but yields continually from November until July.

FOURTH—The calyx is perfect, showing no tendency to bursting.

FIFTH—Its keeping qualities, a point not to be overlooked, are second to none, and equal to the best.

SIXTH—It transplants easily and roots like the proverbial weed.

SEVENTH—As fragrant as any Carnation on the market.

Those who saw it growing are unanimous in declaring the **FRED. BURKI** the ideal white in every respect.

It has scored 88 points at the Detroit Carnation Convention, receiving a Certificate of Merit.

Don't hesitate placing your order for **FRED. BURKI**, it will prove a good investment.

**Prices: \$12.00 per 100; \$100.00 per 1,000;
250 at 1,000 Rates.**

ECLIPSE (F. Dorner & Sons Co.)

A grand pink carnation lighter in color than Lawson, with no cerise or magenta shadings. A color that withstands the brightest sun's rays without the objectionable shadings or bleachings at the edges of the petals. The true merits of this variety are summed up in four points.

FIRST—A strong, free growth and of easy propagation.

SECOND—Large 3½-inch flowers of a beautiful dark shade of clear pink. No imperfect or faded blooms.

THIRD—Comes into flower with the earliest bloomers and produces freely and continually throughout the season. Has never shown any cropping tendency.

We have a large stock and can guarantee early delivery.

**Price, \$12.00 per 100; \$100.00 per 1,000.
Write for Special Prices on Large Lots.**

FIANCEE (F. Dorner & Sons Co.)

Clear pink; a lively, bright pleasing color, a shade not approached by any known variety of carnation at the present time. Flowers are extremely large, three to three and one-half-inch flowers not a rare occurrence; depth, two inches and over. One of the earliest and freest bloomers, continues throughout the entire season without any cessation.

Price, \$12.00 per 100; \$100.00 per 1,000.

CARDINAL (R. Weiterstatter.)

Has medium weight grass, finely covered with healthy "bloom," much freer and quicker in growth than the parent, Estelle. Not a plant has been lost with stem rot and it shows no tendency to bacteria, and is much less susceptible to rust than most varieties. It has an excellent calyx, a splendid form and large size and is a brilliant shade of pure scarlet; brings perfect flowers and 12-inch stems from the first blooms, and by December 1 holds the flower quite erect.

Won the S. A. F. silver medal last February; also, first premium for 100 best scarlet.

Price, \$12.00 per 100; \$100.00 per 1,000.

LIEUT. PEARRY (Ward.)

COLOR—Snow white.

SIZE—Averaging three inches.

FORM—Excellent, with good, strong calyx and broad petals, which are nicely fringed. Calyx is perfect and does not burst, while the fragrance is markedly rich and spicy.

The habit is strong and vigorous growth; healthy, free and continuous, producing a fine crop of large, very finely formed flowers. Stem is long, stands erect and sufficiently strong to properly support the flowers. A splendid keeper and shipper and without doubt one of the best commercial whites in existence.

Price, \$2.00 per dozen; \$12.00 per 100; \$100.00 per 1,000.

RED LAWSON (W. J. Palmer & Son.)

COLOR—It is a bright, pleasing scarlet, habits and growth like its parent, Mrs. Thomas W. Lawson, an excellent keeper. Size is from three to three and three-fourths inches, and it is without a doubt the most productive of any carnation grown, receiving eighty-seven points at Detroit Carnation Show, 1903.

Price, \$10.00 per 100; \$75.00 per 1,000.

RICHMOND GEM (B. K. & B. Floral Co.)

COLOR—Bright shade of scarlet, lighter than Estelle.

SIZE—2½ inches and over.

FORM—Round and well built up in the center; petals slightly serrated.

STEM—Is long and strong, holding the bloom gracefully at all times.

CALYX—Never bursts.

HABIT—Plants are ideal, having no surplus grass. Growth, upright; quick to go to bud and makes a strong, vigorous growth in the field.

This has proved to us to be the best commercial scarlet that has been introduced. It is not a fancy, but gives a profusion of blooms at all times.

Price, \$10.00 per 100; \$75.00 per 1,000.

INTRODUCTIONS OF 1904.

NELSON FISHER.

COLOR—An intense cerise bordering on scarlet,—as compared with Lawson (its pollen parent) it is much deeper and more solid in color. It will produce as many flowers as Lawson. It gives a stem twelve to fifteen inches in the fall, increasing to from twenty-four to thirty inches toward spring. The calyx is perfect and rarely bursts. Flowers average three to three and one-half inches, guard petals broad and well arranged, center of bloom built high—not too full—and petals slightly serrated. The stem is stiff but graceful. Fragrance, strong and spicy.

Has a more vigorous and stronger constitution than Lawson; is an easier grower and far superior to Lawson in every respect. It will supersede Lawson.

Price, \$7.00 per 100; \$60.00 per 1,000.



VASE OF NELSON FISHER.

ETHEL WARD.

Medium large, well-formed flower, full, with high-built center. Color, bright, clear rose pink, which stands well in the sun. Strong clove fragrance; long, strong calyx, which does not burst. Very early, exceptionally free, producing an abundance of flowers throughout the season.

Price, \$6.00 per 100; \$50.00 per 1,000.

OCTOROON.

The bloom is very large, quite full, nicely fringed and splendidly formed. Has a very long, strong calyx, which does not burst, and the flower is very fragrant. Stems long, strong; plants, vigorous, very free and blooms steadily throughout the season.

The brightest colored and most prolific among crimson carnations.

Price, \$6.00 per 100; \$50.00 per 1,000.

FLAMINGO.

It is early, free, continuous, can be had in full flower not only for Christmas, but in October, if desired. It makes absolutely no grass, but only very strong flowering wood. It is a very strong and robust grower.

It always makes strong stems, eighteen to twenty-two inches in October and three feet in mid-season.

Flowers two and one-half inches in October, to three in mid-season. It is of fine form and is very fragrant.

COLOR—A brilliant scarlet.

CALYX—Perfect, does not burst, is a good keeper and shipper.

Price, \$6.00 per 100; \$50.00 per 1,000.

THE BELLE.

This we consider the best white in commerce today. It is the earliest of all white carnations, a strong, clean, healthy grower, with long, stiff stem, producing nothing but high-grade blooms through the season, blooms averaging three inches and over early in the season.

This is the most striking white carnation we have ever grown and will bring a much higher price than any other white on the market on account of its perfectly shaped blooms, its large size and its splendid stem.

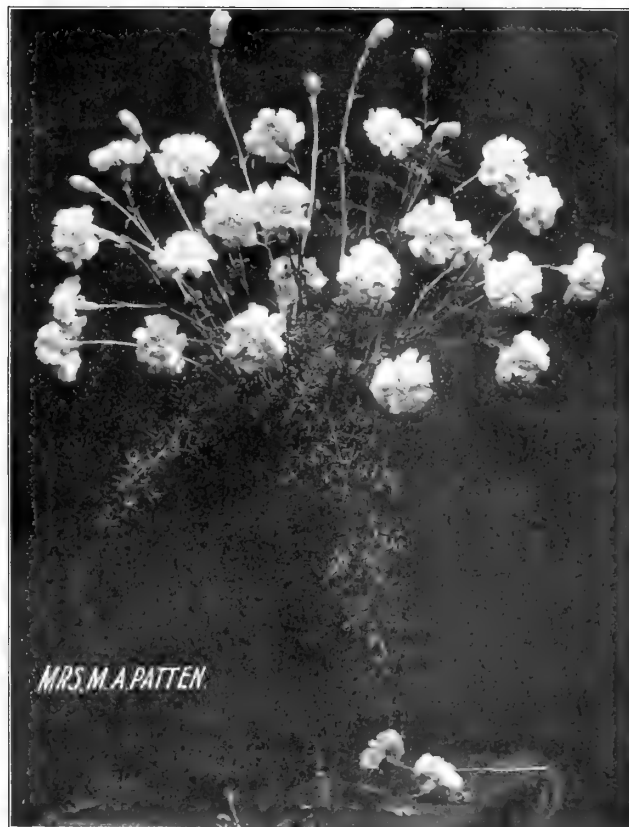
Price, \$6.00 per 100; \$50.00 per 1,000.

MRS. M. A. PATTEN

Amongst variegated varieties this carnation holds the same position as Enchantress and Nelson Fisher in their colors, and is decidedly in the same class.

The ground color is white, beautifully marked with pink (of about the same shade as Lawson) and just enough of it to make the flower chaste and attractive. Early blooms are large, averaging three to three and one-half inches; stems stiff and long from the first; the fragrance is spicy and sweet; habit of plant ideal; has a grand constitution, and makes a splendid growth in the field.

Price, \$6.00 per 100; \$50.00 per 1,000.



VASE OF MRS. M. A. PATTEN.

WHITE LAWSON.

A sport of Mrs. T. W. Lawson, considered to be very prolific, but cannot recommend it as a strictly fancy variety.

Price, \$7.00 per 100; \$60.00 per 1,000.

THE PRESIDENT.

One of the brightest colored, the largest flower and the best formed among crimson carnations. Enormous blooms three inches and upward in diameter upon perfectly stiff stems twenty-four inches and upward long. Strong, vigorous grower. This is a most striking crimson carnation in commerce.

Price, \$6.00 per 100; \$50.00 per 1,000.

LADY BOUNTIFUL.

COLOR—Pure, glistening white.

SIZE OF FLOWERS—Fully three inches.

FRAGRANCE—Spicy clove.

HABIT—Early, free and continuous and an early and easy propagator.

Price, \$6.00 per 100; \$50.00 per 1,000.

FANCY STANDARD VARIETIES.

ENCHANTRESS.

LIGHT PINK.

This most popular light pink variety needs no introduction, as it is grown by every florist from Maine to California and endorsed by all as being the best and most profitable carnation to grow of any ever introduced.

We have the largest and best stock and can supply the best cuttings of the grand variety obtainable. Do not delay ordering.

Price, \$4.00 per 100; \$30.00 per 1,000.

GOV. WOLCOTT.

White.

Pure white blooms of fine form and substance with a uniform average of three inches in diameter, on long, wiry stems, two to three feet in length. The habit of plant is almost ideal; healthy and vigorous, and like the Lawson, (its pollen parent), keeps throwing a succession of new shoots from its base. Its season of blooming is much earlier than White Cloud or Lorna, coming into bloom early in September and continuing to give a succession of grand, attractive flowers all through the season. It is a productive, fancy, commercial white; a splendid keeper and shipper.

We have a large stock of this popular variety.

Price, \$3.00 per 100; \$20.00 per 1,000.

ADONIS.

Scarlet.

COLOUR—A brilliant scarlet of large size.

FLOWERS—Very full, with high center.

A good fancy variety. We recommend early propagation to secure best results.

Price, \$4.00 per 100; \$30.00 per 1,000.

BOSTON MARKET.

Pure white. We consider this one of the best commercial varieties, and will pay more per square foot than any other standard white in commerce. It is very early, free and continuous bloomer, averaging 2½ to 3-inch blooms, borne on long, stiff stem. It is a money-maker and summer bloomer and should be grown by everybody. It can be grown in a temperature varying from 46 degrees to 56 degrees and never splits. It is the "Bread and Butter" white carnation of today and should be grown extensively by everybody.

Price, \$3.00 per 100; \$20.00 per 1,000.

ESTELLE.

Scarlet.

This we consider the best commercial scarlet today. Color, a most brilliant scarlet. Is everybody's favorite. A most excellent keeper and shipper. Blooms measure three inches in diameter and over. We have a larger stock than ever of this grand variety.

Price, \$3.00 per 100; \$25.00 per 1,000.

PROSPERITY.

COLOR—White, overlaid with pink. One of the largest carnations ever offered to the trade, and when given the right culture it has demonstrated it is a most profitable variety to grow. Blooms never measure less than three inches and over four inches, borne on long, stiff, wiry stems thirty inches long.

Price, \$3.00 per 100; \$25.00 per 1,000.

MRS. THOS. W. LAWSON.

Cerise Pink.

This grand variety is only superseded by one variety in its color (Nelson Fisher) and is more extensively grown than any carnation in its color.

Price, \$2.00 per 100; \$15.00 per 1,000.

MRS. E. A. NELSON.

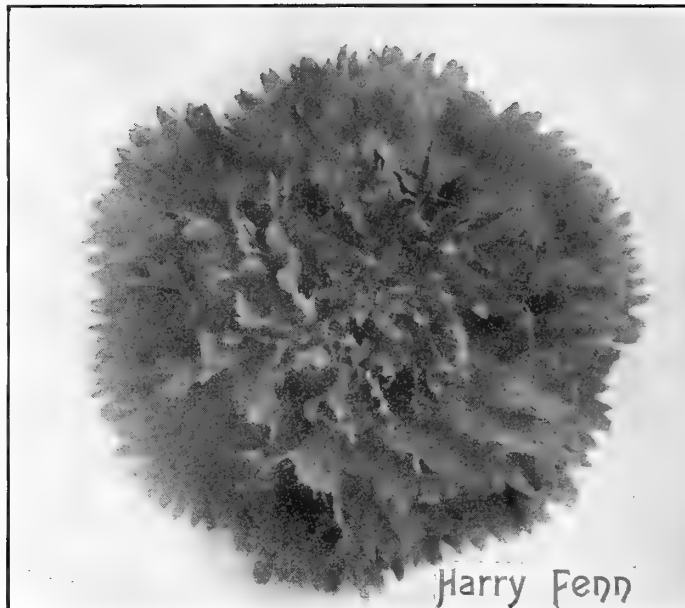
COLOR—A pure, glistening pink, similar to that of Joost.

SIZE—Two and three-quarters to three inches.

STEM—Twenty-four to thirty inches, strong and erect.

HABIT OF GROWTH—Strong, clean and vigorous. We believe it is the best in its color, and can furnish extra strong cuttings, free from disease and rust. It has proved to be a wonderful producer. A good keeper and shipper.

Price, \$3.00 per 100; \$25.00 per 1,000.

**HARRY FENN.**

COLOR—A magnificent crimson, just the Harvard shade; fully as brilliant as the well-known Gen. Gomez; very large, full, symmetrical bloom, poised on an extra long, stiff, wiry stem. At the present time, October 25, we are cutting stems twenty-two to twenty-four inches in length. The habit of the plant is very erect; fully as free a bloomer as Gen. Macco. The fragrance is rich and lasting and the flower is a first-class keeper and an excellent shipper.

Price, \$3.00 per 100; \$25.00 per 1,000.

ROBERT CRAIG.

Having disposed of one-half interest in the above carnation to the J. D. THOMPSON CARNATION COMPANY, of Joliet, Ill., I desire to announce that the same will be jointly introduced by the J. D. THOMPSON CARNATION COMPANY and the COTTAGE GARDENS COMPANY during the season of 1905-1906. I consider this the finest carnation I have produced to date and unquestionably the grandest scarlet carnation in existence.

C. W. WARD, Originator.

Before placing your orders for a SCARLET CARNATION for future growing, wait and examine the largest, most prolific, the best and most profitable scarlet ever produced. It scored 92 points at the meeting of the American Carnation Society at Detroit, on March 2, which was the highest score given to any carnation in the exhibit. All the scarlet aspirants were there.

DESCRIPTION.

NO. 303—01 (WARD)—Pedigree Lawson x Scarlet Seedling (Ward), the latter one of the series which produced the celebrated Gen. Maceo, Gen. Gomez, Governor Roosevelt, Harry Fenn, the President, Octoroon and Ethel Ward.

HABIT—Strong, clean, healthy and vigorous. Produces no surplus grass. Ideal in every respect.

STEM—As strong as Lawson at its best, 24 to 30 inches long, producing long stems from the beginning.

BLOOMING—Early, free and continuous, coming into flower in September and giving a full crop for Christmas. Fully as free as Lawson.

SIZE—Averaging $3\frac{1}{4}$ inches throughout the season, a fine bloomer reaching $3\frac{3}{4}$ to 4 inches during December and January.

CALYX—Perfect and no bursted flowers to date.

FOLIAGE—Semi-broad, long and of a rich glaucous blue color denoting a vigorous constitution, no healthier carnation known.

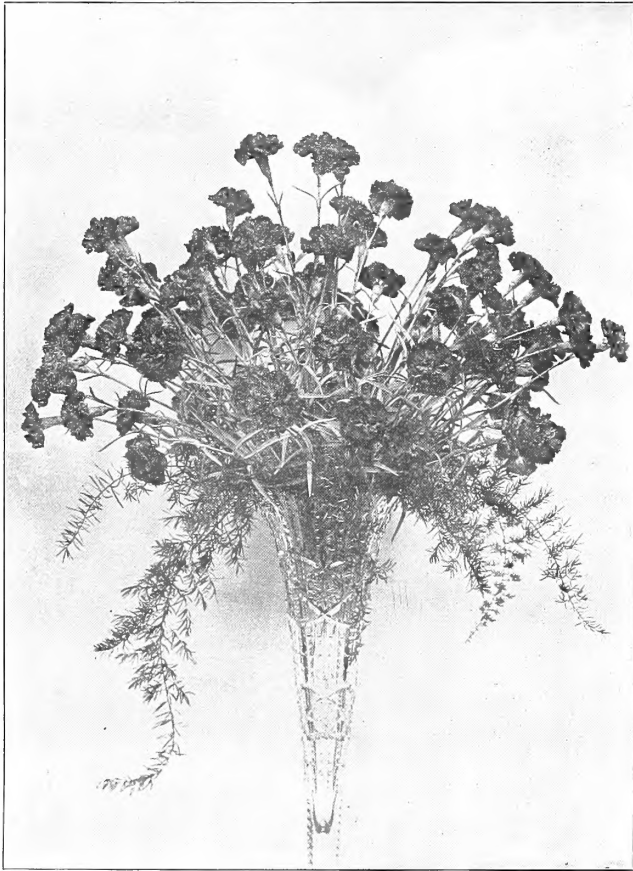
COLOR—Bright vermilion scarlet, an exact match for the holly berry. Stands the sun perfectly on the plant with not a trace of blacking or slating of the petals at any period.

FRAGRANCE—Strong, rich clove.

To Be Disseminated in 1906.

Orders will now be accepted with the privilege of cancelation at any time prior to November 1, 1905, if upon inspection of the variety when growing, party ordering is not satisfied to let his order stand.

**Price, \$2.50 per dozen; \$12.00 per 100; \$100.00 per 1,000;
2,500 at \$95.00 per 1,000; 5,000 at \$90.00 per 1,000;
10,000 at \$80.00 per 1,000.**



VASE OF ROBERT CRAIG.—Photographed October 15th.

ROBERT CRAIG.

Honors won in November, 1904:

Winner of Craig Cup at Philadelphia for the best American Seedling.

Winner of the first prize, donated by J. Hartman Kuhn, Esq., Philadelphia, for the best undisseminated seedling.

Winner of the first prize, Chicago, for best 100 blooms of scarlet.

Winner of the first prize, Chicago, for best scarlet seedling carnation.

First-class Certificate of Merit—Massachusetts Horticultural Society.

First-class Certificate of Merit—Pennsylvania Horticultural Society.

First-class Certificate of Merit—New York Florists' Club.

Special Diploma—American Institute of New York.

MOREHEAD RETURN STEAM TRAP.

For returning condensation from coils direct to boiler. It makes no difference if boiler is above or below grade. Traps are being used by such leading florists as Peter Reinberg and George Reinberg, of Chicago; J. D. Thompson Carnation Co., Joliet, Ill., and J. Breitmeyer's Sons, Mt. Clemens, Mich. For further information, address

JOHN MOREHEAD,
707 Brooklyn Ave., Detroit, Mich.

We will say in regard to the above trap that it will save you twenty per cent each year on your coal bill, as it returns the water to the boiler hotter than it can be pumped and there is no waste of exhaust steam, and steam is as dry at the farthest end of the return as in the supply.

J. D. THOMPSON CARNATION CO.

